

The Bulldog is truly a multi-purpose vessel and can be transported quickly and cheaply by road, water and rail to every conceivable location.

The Bulldog, our 'go anywhere, do anything' vessel and joined our fleet in July 2015.

Originally built in 1999 in the Netherlands, the Bulldog is a bars multipontoon, able to tow and push, fetch and carry. The Bulldog is also equipped with a Palfinger PK32080 marine crane with a 3.5 ton winch.



Bulldog multicat working on the Thames

In addition to this the Bulldog also boasts a telescopic wheelhouse which can be raised to a viewing height of 4.8m or lowered when a low air-draught is required.

Vessel Specification

Dimensions

Length	Beam	Max Draught
14.76m	7.35m	1.2m

Main engines

2x Deutz marine BF6M 1013M

Generator sets - John Deere 4045TFU70
230/400 V



Bulldog multicat utilising her crane

Features

Deck crane - Palfinger PK32080 3.5 ton winch, with deck or remote control

Deck crane lifting capability - 6660kg @ 4.4m to 2260kg @ 12m

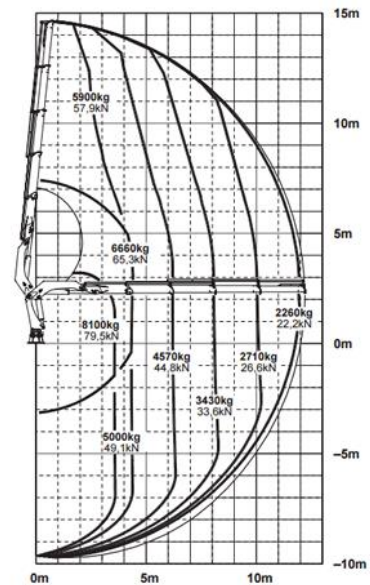
Tuggerwinches - 2 X Brevini 5.1 tons \varnothing 16 mm, 13.4 m / min per

Torque Winches - 2 X 20 tons coupling winches Towing hook - Mampaey 15 tonne SWL

30cm moon-pool

Wheelhouse - Height of wheelhouse adjustable for a viewing height of 4.80 m

11m spud pole for mooring



Bulldog's marine crane load chart

Navigational equipment

GPS - Periskal

Radar system - Alpatron JMA 608 radar river barge

VHF - 2x Sailor RT-4248

Automatic pilot - Alpatron combi-pilot

AIS - PROTEC W-AIS Inland Waterway

Safety equipment

Searchlights - 1 X DHR 1000 W

Deck lighting - 2 X 500 W

Suitable for use as

Bridge survey boat, dive boat, film and camera boat, windfarm support vessel, towing, pushing, lifting, fetching, carrying, site work, marine construction support vessel, repair and all round maintenance boat.