

MPV CHILI DOG

Ideal multicat for reduced depth of water and working in areas with restricted air draft (low bridges). Only one metre draft and four metre airdraft.

The Chili Dog is impressive with a huge deck area and load capability as well as boasting long spuds for mooring and moving ideal for diving, survey and site investigation works as moon pool housed on the vessel too.



Vessel Specification

Dimensions

Length	Beam	Draught	Air Draught
16.1m	8.3m	1m	4m

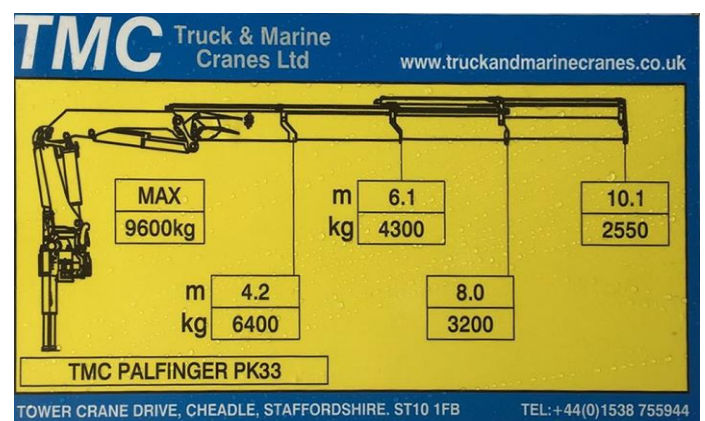
Main engines

2 * Caterpillar 3304 Twin screw 176KW

Generator

Yanmar 45KVA 230/400V

10KVA Harbour Set





MPV CHILI DOG

Features

- Deck Crane Palfinger PK33
- 10 Ton Deck Winch
- Towing Hook
- 3 * 300MM SPUD wells
- 2 * 12m SPUDS for mooring

Safety equipment

- Search Light 1000W
- 4 * 500W Deck Lighting
- 1 * 12 Person Open Reversible Life Raft
- 4 * Lifebuoys – 2 with lights and 2 with throwlines
- 1 * CAT C First Aid Kit

Navigational equipment

- Radar System Furuno Model 1623
- VHF 2 * Sailor RT.4248 GMDSS
- Monacor Deck Comms
- GPS Plotter Furuno
- Comar AIS Class A