

MPV SEADOG

Seadog is a highly manoeuvrable and powerful multicat type vessel.

New to CPBS in June 2016, the Sea Dog combines shallow water operation with low air draft and has the ability to tow and push barges, carry heavy deckload and handle up to six ton anchors.

In 2013 a new telescopic wheelhouse was fitted to allow to great flexibility. In its lowest position the new wheelhouse significantly reduces the vessel's air draft to allow passage under bridge arches without compromising performance, whilst raising it to its full height provides enhanced visibility.

Inside the large chart table area provides ample space for survey equipment.



Seadog working on the Thames July 2016

Vessel Specification

Dimensions

Length	Beam	Max Draught
20m	9m	1.75m

Main engines

2x CAT 3408 TA

800HP with twin screw in kort nozzles

Generator: 240 and 380 volts



Features

Speed: 8 knots

Hydraulic winch: 18 tons (pull), 30 tons (holding)

Bollard Pull: 9.5 tons

Deck crane: 55 ton Mts. (13 tons @ 4.1m - 7 tons @ 7.5m - 3 tons @ 11.75m)

Fuel: Running tanks 15.000 lts. Main tanks 2 x 30.000 lts

Fresh water: (Domestic) 2 x 11 tons / (Main) 2 x 30 tons

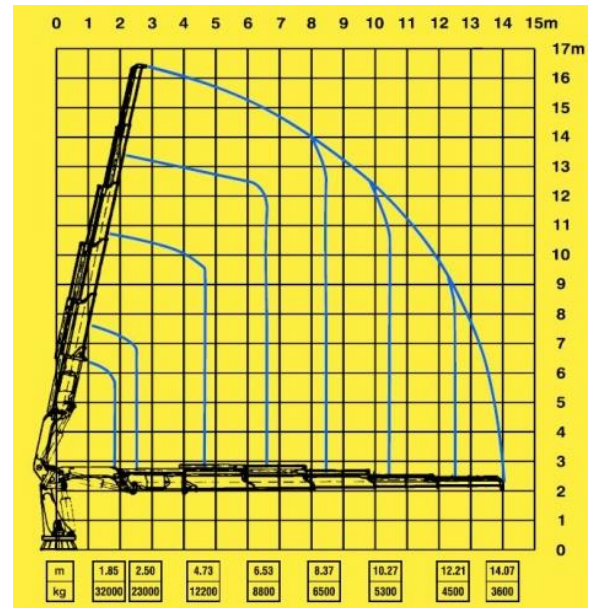
Transfer pumps for fuel and fresh water

Deck load: 100 tons (on smooth water), 70 tons (at sea)

Moon pool: 500mm

Hydraulic power: Ma 30 gal/min @ 250bar

On board accommodation: Full crew accommodation, day accommodation for up to six passengers.



Seadog's marine crane load chart

Suitable for use as

Bridge survey boat, dive boat, film and camera boat, windfarm support vessel, towing, pushing, lifting, fetching, carrying, site work, marine construction support vessel, repair and all round maintenance boat.